

# Christ Church London: Safeguarding Policy

## November 2022

### Section 1: Introduction

CHRIST CHURCH LONDON	
REGISTERED OFFICES	
1-3 Coborn Street London E3 2AB	<a href="mailto:office@christchurchlondon.org">office@christchurchlondon.org</a> christchurchlondon.org
SUNDAY SERVICES	
Stockwell: 10am: Platanos College, Clapham Road, London SW9 0AL	
Sutton: 10.30am: Cryer Arts Theatre, 39 High St, Carshalton SM5 3BB	
Central London: 11am: Old Theatre, London School of Economics, Houghton Street	
Mile End: 10.30am and 5pm: 1-3 Coborn Street, London E3 2AB	
MORE INFORMATION: <a href="https://christchurchlondon.org/sunday-services/">https://christchurchlondon.org/sunday-services/</a>	
OTHER ACTIVITIES: Vauxhall Foodbank, Pastoral Support Team, STEPS course, Alpha Course	
REGISTERED CHARITY NO:	1111950
COMPANY NO:	05546205
INSURANCE:	Public Liability insurance provided by: Access Insurance

SAFEGUARDING CONTACTS			
Safeguarding Trustee	All services	Chee Yeen Fung	<a href="mailto:Safeguarding@christchurchlondon.org">Safeguarding@christchurchlondon.org</a>
Safeguarding Coordinator	All services	Sarah Cobbold	<a href="mailto:sarah@christchurchlondon.org">sarah@christchurchlondon.org</a> 07976 113982
Safeguarding Champions	Stockwell	Louisa Richards	<a href="mailto:stockwellsafeguarding@christchurchlondon.org">stockwellsafeguarding@christchurchlondon.org</a>
	Sutton	Heather Rushton	<a href="mailto:suttonsafeguarding@christchurchlondon.org">suttonsafeguarding@christchurchlondon.org</a>
	Central	Lauren Harrison	<a href="mailto:centralsafeguarding@christchurchlondon.org">centralsafeguarding@christchurchlondon.org</a>
	Mile End	Izzie May	<a href="mailto:mileendsafeguarding@christchurchlondon.org">mileendsafeguarding@christchurchlondon.org</a>
	Vauxhall Foodbank	Ileri Ogunbanwo	<a href="mailto:foodbank@christchurchlondon.org">foodbank@christchurchlondon.org</a> 07398 860992

Christ Church London seeks to be a community in London that serves the capital and beyond. As a church we want to engage with people's questions, and create an environment where anyone can explore matters of faith. We want to help everyone discover how they can use their unique skills and passions to contribute to the strengthening of society, build community and serve those who

are in need. We want to be a church that is empowered by God the Holy Spirit to live effective lives and do what Jesus asks us to do.

We run Sunday activities at our morning services for children and young people, while parents attend the service, and we are also involved with social action projects reaching local communities around London.

<b>Definitions</b>	
<b>Safeguarding</b>	In this policy, safeguarding is defined as protecting all people who come into contact with Christ Church London. This includes all those who benefit from our work and activities, our staff and volunteers, and especially children, young people and adults with care and support needs.
<b>Children</b>	A person under the age of 18. Safeguarding children means to: <ul style="list-style-type: none"> <li>• protect children from abuse and maltreatment</li> <li>• prevent harm to children’s health or development</li> <li>• ensure children grow up with the provision of safe and effective care</li> <li>• take action to enable all children and young people to have the best outcomes<sup>1</sup></li> </ul>
<b>Adult with care and support needs</b>	Safeguarding adults at risk means protecting their right to live in safety and free from abuse and neglect. Adults at risk may: <ul style="list-style-type: none"> <li>• have needs for care and support (whether or not the local authority is meeting any of those needs) and</li> <li>• as a result of those care and support needs be unable to protect themselves from either the risk of, or the experience of abuse or neglect.</li> <li>• be experiencing, or is at risk of, abuse or neglect</li> </ul>
	An adult at risk of abuse may: <ul style="list-style-type: none"> <li>• have an illness affecting their mental or physical health</li> <li>• suffer from drug or alcohol problems</li> <li>• have a learning disability</li> <li>• be frail<sup>1</sup></li> </ul>
<b>Workers</b>	Workers in this context refers to all paid staff, contractors and volunteers with responsibility for children or vulnerable adults, or those looking after adults with care and support needs
<b>Vulnerable Adult</b>	The term ‘vulnerable adult’ refers to a person aged 18 or over whose ability to protect himself or herself from violence, abuse, neglect or exploitation is significantly impaired through physical or mental disability, illness, old age, emotional fragility, distress, or otherwise; and for that purpose, the reference to being impaired is to being temporarily or indefinitely impaired.

The trustees and senior leaders recognise the need to provide a safe and caring environment for everyone, especially children, young people and adults with care and support needs. We acknowledge that children, young people and adults can be the victims of physical, sexual, financial and emotional abuse, and neglect.

<sup>1</sup> <https://www.gov.uk/guidance/safeguarding-duties-for-charity-trustees#children-adults-at-risk>

We want to create an environment that is safe for everyone, and as such we take a zero tolerance approach to all abuse, including but not limited to discrimination, harassment and bullying. As leaders we have therefore adopted the procedures set out in this **Safeguarding Policy** and **Safeguarding Handbook** in accordance with statutory guidance. We are committed to building constructive links with statutory and voluntary agencies involved in safeguarding.

The policy and handbook are based on the ten Safe and Secure safeguarding standards published by thirtyone:eight.

The trustees and senior leaders undertake to:

- Promote a safer environment and culture.
- Commit to the safe recruitment, support and training of those with responsibility related to children, young people and vulnerable adults in the church
- Respond promptly to every safeguarding concern or allegation
- Care pastorally for victims/survivors of abuse and other affected persons.
- Care pastorally for those who are the subject of concerns or allegations of abuse and other affected persons.
- Respond to those that may pose a present risk to others.
- Promote a culture of zero tolerance of all forms of abuse, and a culture of treating everyone with dignity and respect in attitude, language, and actions, throughout all of the church's activities.
- Support the Safeguarding Coordinators and Champions in their work and in any action they may need to take in order to protect children and adults with care and support needs.

## Section 2: Prevention

### Understanding abuse and neglect

Defining child abuse or abuse against an adult is a difficult and complex issue. A person may abuse by inflicting harm or failing to prevent harm. Children and adults in need of protection may be abused within a family, an institution or a community setting. Very often the abuser is known or in a trusted relationship with the child or adult.

Detailed definitions, and signs and indicators of abuse, as well as how to respond to a disclosure of abuse, are included in our **Safeguarding Handbook, which can be found on CCLs internal staff webpage**.

### Safer recruitment

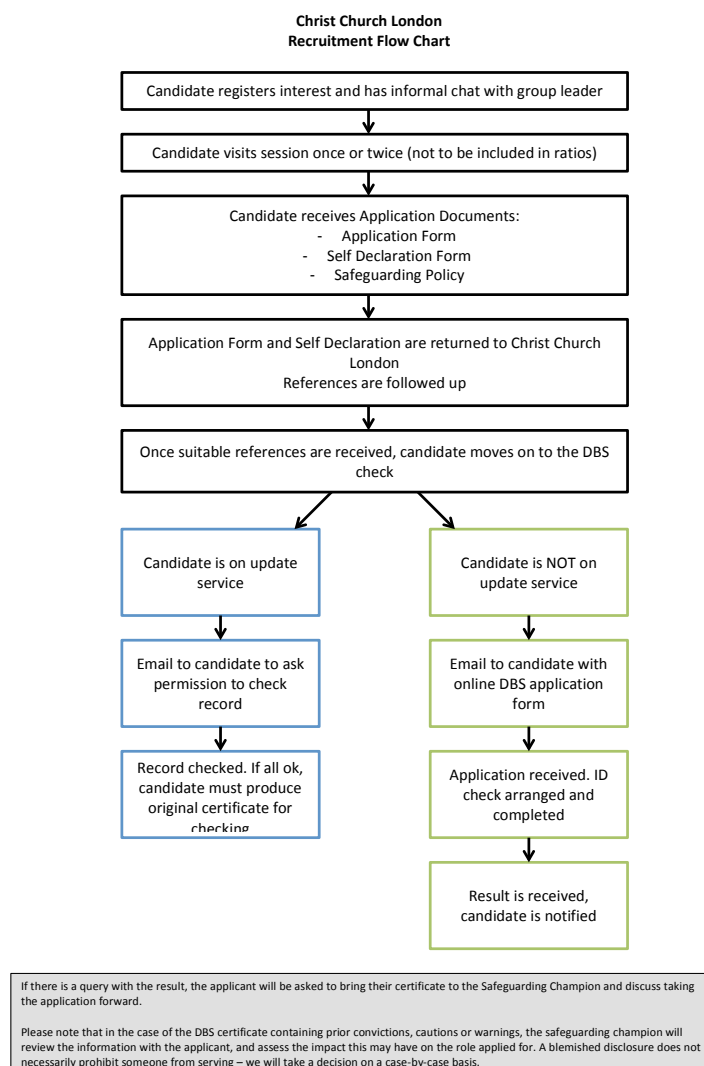
The trustees and senior leaders will ensure all workers will be appointed, trained, supported and supervised in accordance with government guidance on safe recruitment. This includes ensuring that:

- There is a written job description / person specification for the post
- Those applying have completed an application form and a self declaration form
- Those shortlisted have been interviewed. Volunteers will have an informal chat about their suitability for the serving position
- Safeguarding has been discussed at interview or the informal chat
- Written references have been obtained, and followed up where appropriate

- A disclosure and barring check has been completed where necessary (we will comply with Code of Practice requirements concerning the fair treatment of applicants and the handling of information)
- Qualifications where relevant have been verified
- A suitable training programme is provided for the successful applicant
- The applicant has completed a probationary period
- The applicant has been given a copy of the organisation’s safeguarding policy and knows how to report concerns.

We follow the flow chart in **Figure 1** for recruiting volunteers for children’s work.

**Figure 1:**



### Safeguarding training

The trustees and senior leaders are committed to on-going safeguarding training and development opportunities for all workers, developing a culture of awareness of safeguarding issues to help protect everyone. Our senior leaders, staff, safeguarding trustee, co-ordinator, champions and children’s/youth workers will attend external training sessions every three years. Our volunteer workers will receive in-house safeguarding awareness training at least annually.

The trustees and senior leaders will also ensure that children and adults with care and support needs are provided with information on where to get help and advice in relation to abuse, discrimination, bullying or any other matter where they have a concern.

### **Code of Conduct**

The trustees and senior leaders are committed to supporting all workers and ensuring they receive support and supervision. All workers have been issued with a code of conduct towards children, young people and adults with care and support needs.

As a Christian organisation committed to working with people including children and adults in need of care and support, it is expected that all staff and volunteers conduct themselves in a manner which will give proper expression to faith in Jesus Christ as Lord while they are in this position of trust.

We expect our workers to adhere to the following code of conduct:

- Ensure that everyone is treated with dignity and respect in attitude, language and actions.
- Maintain high standards of behaviour at all times
- Act inclusively, making everyone feel welcome and valued
- Listen well, and with regard to disclosures from children or vulnerable adults (see figures 2 and 3), report any concerns to the Safeguarding Champion or Coordinator
- Maintain an environment free from harassment, bullying and victimisation by anyone
- Act with integrity at all times
- Recognise that all adults working with children, young people and vulnerable adults are in positions of trust, and ensure they do not, even unwittingly, use their position of power and authority inappropriately
- We encourage our staff and volunteers to maintain a personal devotional life through regular times of prayer and bible readings
- Maintain boundaries (including via personal social media accounts) and avoid behaviour that might be misinterpreted. Any kind of sexual relationship between an adult and a child (under the age of 18) is never acceptable and if concerns arise in this area, this should be recorded and reported to the Safeguarding Trustee
- Promote a culture that does not tolerate inappropriate, discriminatory, offensive or harmful behaviour towards any person, including through social media (either with personal or CCL-run accounts).

If you experience or witness unacceptable behaviour, contact the Safeguarding Champion to report your concerns. All concerns reported will be treated seriously and sensitively.

## **Section 3: Practice Guidelines**

As a church working with children, young people and adults with care and support needs we wish to operate and promote good working practice. This will enable workers to run activities safely, develop good relationships and minimise the risk of false or unfounded accusation.

As well as a general code of conduct for workers we also have specific good practice guidelines for every activity we are involved in and these are found in the **Safeguarding Handbook**.

## Working in Partnership

Christ Church London works in partnership with a range of organisations to support the objectives of the church and reach those most in need, in the UK and in developing countries. The diversity of organisations and settings means there can be great variation in practice when it comes to safeguarding children, young people and adults. This can be because of cultural tradition, belief and religious practice or understanding, for example, of what constitutes abuse.

Nevertheless, we maintain a zero tolerance approach to all forms of abuse with regards to the activities of our partners. We therefore have clear guidelines in regards to our expectations of those with whom we work in partnership, whether they are in the UK or overseas. We will discuss with all partners our safeguarding expectations and have a partnership agreement for safeguarding.

Where information needs to be shared with partner organisations or safeguarding services, a data sharing agreement will be in place. Wherever possible, this information will be shared with consent, unless there is a lawful basis to share without consent, such as safety being at risk. We will ensure that the information we share is necessary for the purpose for which we are sharing it, is shared only with those individuals who need to have it, is accurate and up-to-date, is shared in a timely fashion, and is shared securely<sup>2</sup>. We understand our responsibility to keep children safe regarding data protection and GDPR and will act in accordance with these laws.

We believe good communication is essential in promoting safeguarding, both to those we wish to protect, to everyone involved in working with children and adults and to all those with whom we work in partnership. This safeguarding policy is just one means of promoting safeguarding.

## Section 4: Responding to allegations of abuse

We are committed to encouraging and enabling anyone to come forward and raise concerns related to safeguarding. All concerns will be treated seriously and sensitively.

Under no circumstances should a volunteer or worker carry out their own investigation into an allegation or suspicion of abuse. Follow procedures according to the flowchart in **Figure 2** below.

### Guidance for responding to a concern or allegation raised

#### Remember the 5 Rs, (1) Receive, (2) Reassure, (3) React, (4) Record, (5) Report

The worker should respond to a concern in the following way:

##### 1. Receive

Always stop and listen straight away to someone who wants to tell you about incidents or suspicions of abuse. Listen quietly and actively, giving your undivided attention. Allow silences when needed. Do not show shock or disbelief and take what is said seriously.

##### 2. Reassure

<sup>2</sup>[https://assets.publishing.service.gov.uk/government/uploads/system/uploads/attachment\\_data/file/721581/Information\\_sharing\\_advice\\_practitioners\\_safeguarding\\_services.pdf](https://assets.publishing.service.gov.uk/government/uploads/system/uploads/attachment_data/file/721581/Information_sharing_advice_practitioners_safeguarding_services.pdf)

It is important to stay calm, make no judgements and empathise. Never make a promise to keep what has been said a secret. Give reassurance that only those who need to know will be told. Reassure the person that they were right to tell you.

**3. React**

React only as far as is necessary for you to establish whether or not you need to refer this matter, but don't interrogate for full details.

Refrain from asking leading questions or from criticising the alleged perpetrator.

If you need to try to get more detail about what has been disclosed, use questions such as tell me, explain to me and describe to me.

If you do ask further questions, please remember to record the questions you have asked as well as the responses provided.

Do not criticise the perpetrator; the person may have affection for him/her.

Explain your next steps to the victim, i.e. who you will be speaking to and what will happen next.

**4. Record**

If possible make brief notes about what they are telling you at the time. Keep these notes, however rough they are. If you are unable to make notes at the time write down what was said as soon as you can.

Record what was actually said by the person reporting a concern rather than your interpretation of what they are telling you, be factual at all times.

Record the date, time, place and any noticeable nonverbal behaviour.

**5. Report**

Report the incident to the Local Safeguarding Champion and do not tell any other adults or children what you have been told.

**Never attempt to carry out an investigation of suspected abuse by interviewing the young person or any others involved. This is a highly skilled role and any attempts on your own could affect possible criminal proceedings.**

- The person in receipt of allegations or suspicions of abuse should report concerns as soon as possible to the Safeguarding Champion for their service:

Safeguarding Champions	Stockwell	Louise Richards	<a href="mailto:stockwellsafeguarding@christchurchlondon.org">stockwellsafeguarding@christchurchlondon.org</a>
	Sutton	Heather Rushton	<a href="mailto:suttonsafeguarding@christchurchlondon.org">suttonsafeguarding@christchurchlondon.org</a>
	Central	Lauren Harrison	<a href="mailto:centeralsafeguarding@christchurchlondon.org">centeralsafeguarding@christchurchlondon.org</a>

	Mile End	Izzie May	mileendsafeguarding@christchurchlondon.org
	Vauxhall Foodbank	Ileri Ogunbanwo	<a href="mailto:foodbank@christchurchlondon.org">foodbank@christchurchlondon.org</a> 07398 860992

- In the absence of the Safeguarding Champion or, if the suspicions in any way involve the Safeguarding Champion, then the report should be made to:

Safeguarding Trustee	All services	Chee Yeen Fung	<a href="mailto:Safeguarding@christchurchlondon.org">Safeguarding@christchurchlondon.org</a>
Safeguarding Coordinator	All services	Sarah Cobbold	<a href="mailto:sarah@christchurchlondon.org">sarah@christchurchlondon.org</a> 07976 113982

The above people are nominated by the trustees and senior leaders to act on their behalf in dealing with the allegation or suspicion of neglect or abuse, including referring the matter on to the statutory authorities.

If the suspicions implicate the Safeguarding Champions, the Coordinator and the Trustee, then the report should be made in the first instance to:

**thirtyone:eight**

PO Box 133, Swanley, Kent, BR8 7UQ.

Tel: 0303 003 1111.

Alternatively contact Social Services or the police.

- The Safeguarding Team member should contact the appropriate agency or they may first ring the thirtyone:eight helpline for advice. They should then contact social services in the area the child or adult lives.

CHRIST CHURCH LONDON SERVICE	SOCIAL SERVICES CONTACT INFORMATION	
	CHILD SERVICES (OUT OF HOURS)	ADULT SERVICES (OUT OF HOURS)
<b>STOCKWELL &amp; VAUXHALL FOODBANK</b>	LAMBETH: 020 7926 5555	LAMBETH: Call 101 or online form: <a href="https://www.lambeth.gov.uk/forms/raising-concerns-that-an-adult-may-be-at-risk-form">https://www.lambeth.gov.uk/forms/raising-concerns-that-an-adult-may-be-at-risk-form</a>
<b>SUTTON</b>	SUTTON: 020 8770 5000	SUTTON: <a href="http://www.suttonsab.co.uk">www.suttonsab.co.uk</a> <b>020 8770 6770</b>
<b>CENTRAL LONDON</b>	CITY OF LONDON: 020 8356 2710	CITY OF LONDON: 020 8356 2300
<b>MILE END</b>	TOWER HAMLETS: 020 7364 5601	TOWER HAMLETS: 0300 303 6070

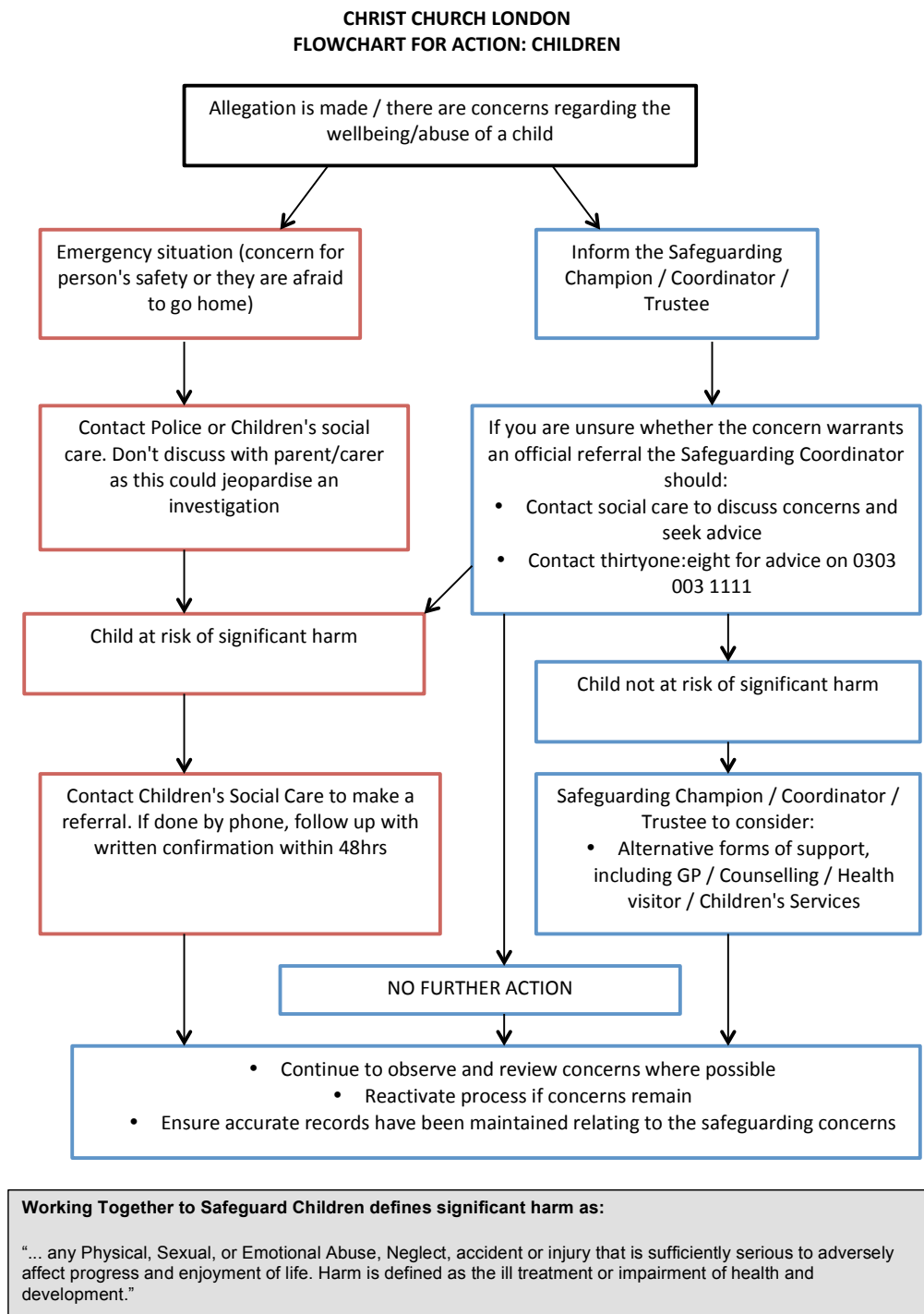
- The Safeguarding Coordinator may need to inform others depending on the circumstances and/or nature of the concern:
  - Trustee responsible for safeguarding who may need to liaise with the insurance company or the charity commission to report a serious incident.



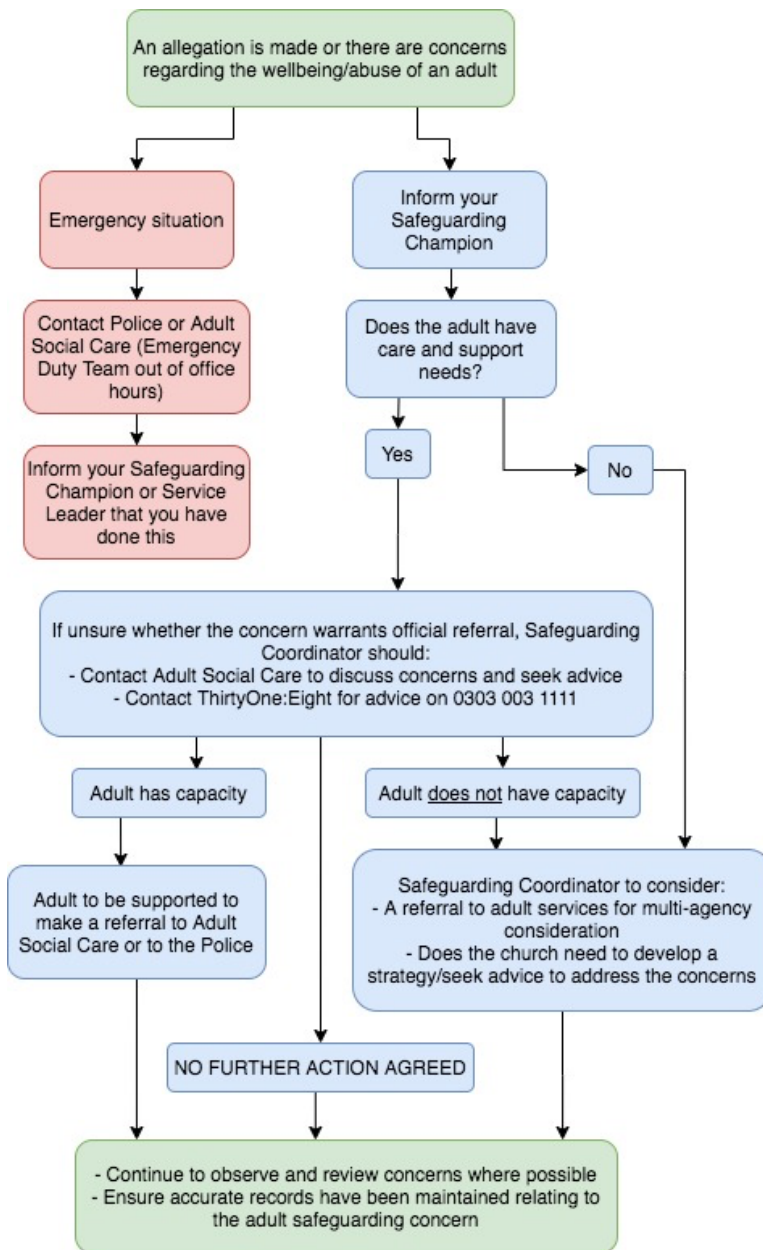
- Designated officer or LADO (Local Authority Designated Officer) if the allegation concerns a worker or volunteer working with someone under 18.
- Suspicions must not be discussed with anyone other than those nominated above. A written record of the concerns should be made in accordance with these procedures and kept in a secure place.
- Whilst allegations or suspicions of abuse will normally be reported to the Safeguarding Champion, the absence of the Safeguarding Team should not delay referral to Social Services, the Police or taking advice from thirtyone:eight.
- The trustees and senior leaders will support the Safeguarding Team in their roles and accept that any information they may have in their possession will be shared in a strictly limited way on a need to know basis.
- It is, of course, the right of any individual as a citizen to make a direct referral to the safeguarding agencies or seek advice from thirtyone:eight, although the Leadership hope that members of the church will use the process outlined above. If, however, the individual with the concern feels that the Safeguarding Team has not responded appropriately, or where they have a disagreement with the Safeguarding Team as to the appropriateness of a referral they are free to contact an outside agency direct. We hope by making this statement that the trustees and senior leaders demonstrate its commitment to effective safeguarding and the protection of all those who are vulnerable.

The role of the safeguarding coordinator is to collate and clarify the precise details of the allegation or suspicion and pass this information on to statutory agencies who have a legal duty to investigate.

**Figure 2:**



**Figure 3: CHRIST CHURCH LONDON FLOWCHART FOR ACTION: ADULTS**



**Section 5: Pastoral Care**

**Supporting those affected by abuse**

The trustees and senior leaders are committed to offering pastoral care, working with statutory agencies as appropriate, and support to all those who have been affected by abuse who have contact with or are part of Christ Church London. Pastoral support will be offered through an individual’s Community Group leader in the first instance. Our pastoral support team may also be called upon for a defined period of prayer support, and we offer a number of pastoral courses through the year. We also refer people to professional counselling services for specialist help.

**Working with offenders and those who may pose a risk**

When someone attending the church is known to have abused children, or is known to be a risk to adults the service leaders will arrange supervision of the individual concerned and offer pastoral

care, but in its safeguarding commitment to the protection of everyone who may be at risk of harm, will set boundaries for that person which they will be expected to keep.

We will assess whether we feel that Christ Church London has the necessary structures in place to fully support the individual. In discussion with the individual and their supporting officer, we may agree boundaries for all church activities, in particular those activities with children present. The agreement will be tailored to each individual.

We will work closely with any statutory authorities with responsibility for the offender, cooperating with them to help and support the individual.

Please note that the leaders responsible for children may be made aware of any boundaries that are in place without being given details of the offender's history.

---

## **Adoption of the policy**

This policy was agreed by the trustees and senior leaders and will be reviewed annually

Approved on behalf of the trustees by Nate Sence, Executive Director, Head of Operations on 1 April 2022.

*Updated 16 November 2022*

**To be reviewed March 2023**