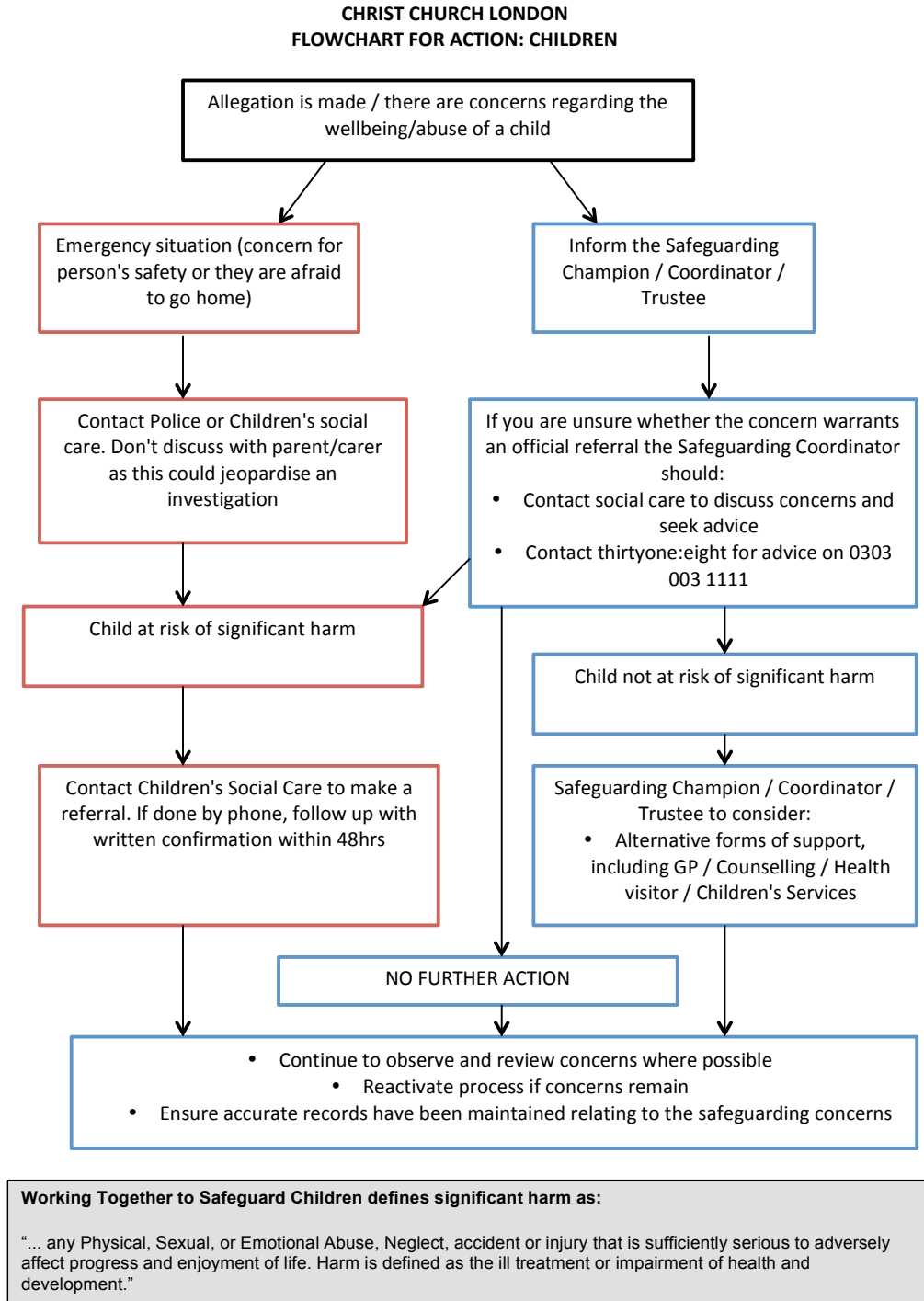


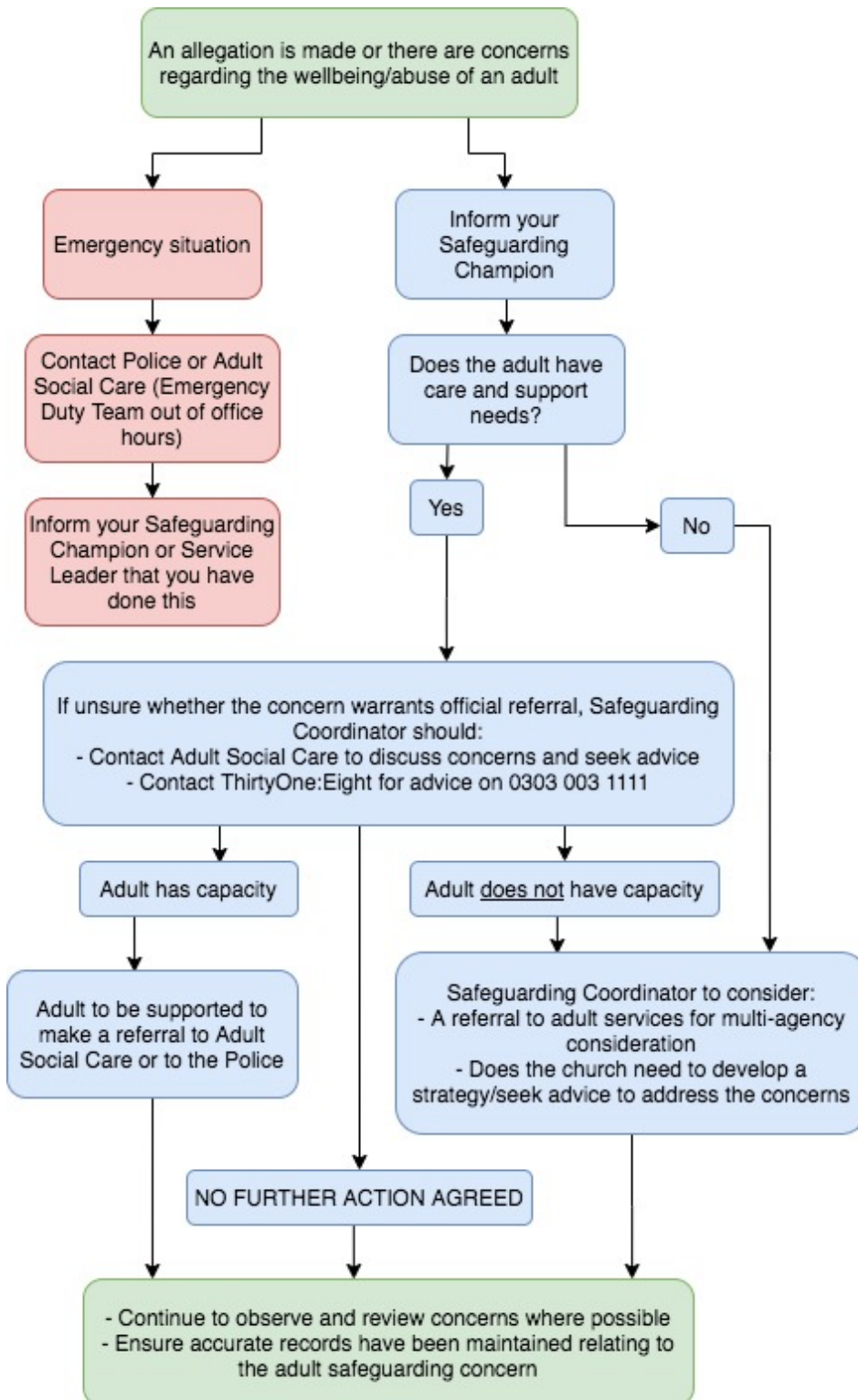


- The trustees and senior leaders will support the Safeguarding Team in their roles and accept that any information they may have in their possession will be shared in a strictly limited way on a need to know basis.
- It is, of course, the right of any individual as a citizen to make a direct referral to the safeguarding agencies or seek advice from thirtyone:eight, although the Leadership hope that members of the church will use the process outlined above. If, however, the individual with the concern feels that the Safeguarding Team has not responded appropriately, or where they have a disagreement with the Safeguarding Team as to the appropriateness of a referral they are free to contact an outside agency direct. We hope by making this statement that the trustees and senior leaders demonstrate its commitment to effective safeguarding and the protection of all those who are vulnerable.

The role of the safeguarding co-ordinator/ deputy is to collate and clarify the precise details of the allegation or suspicion and pass this information on to statutory agencies who have a legal duty to investigate.

Figure 2:







SECTION 5: PASTORAL CARE

Supporting those affected by abuse

The trustees and senior leaders are committed to offering pastoral care, working with statutory agencies as appropriate, and support to all those who have been affected by abuse who have contact with or are part of Christ Church London. Pastoral support will be offered through an individual's Connect Group leader in the first instance. Our pastoral support team may also be called upon for a defined period of prayer support, and we offer a number of pastoral courses through the year. We also refer people to professional counselling services for specialist help.

Working with offenders and those who may pose a risk

When someone attending the church is known to have abused children, or is known to be a risk to adults the service leaders will arrange supervision of the individual concerned and offer pastoral care, but in its safeguarding commitment to the protection of everyone who may be at risk of harm, will set boundaries for that person which they will be expected to keep.

We will assess whether we feel that Christ Church London has the necessary structures in place to fully support the individual. In discussion with the individual and their supporting officer, we may agree boundaries for all church activities, in particular those activities with children present. The agreement will be tailored to each individual but may include some or all of the clauses highlighted in Appendix F.

We will work closely with any statutory authorities with responsibility for the offender, cooperating with them to help and support the individual.

Please note that the leaders responsible for children may be made aware of any boundaries that are in place without being given details of the offender's history.

This policy was agreed by the trustees and senior leaders and will be reviewed annually
Approved on behalf of the trustees by Nate Sence, Executive Director, Head of Operations on 1 April 2022.

Version 1.1 | March 2022

No part of this publication may be shared, distributed, or transmitted without permission.